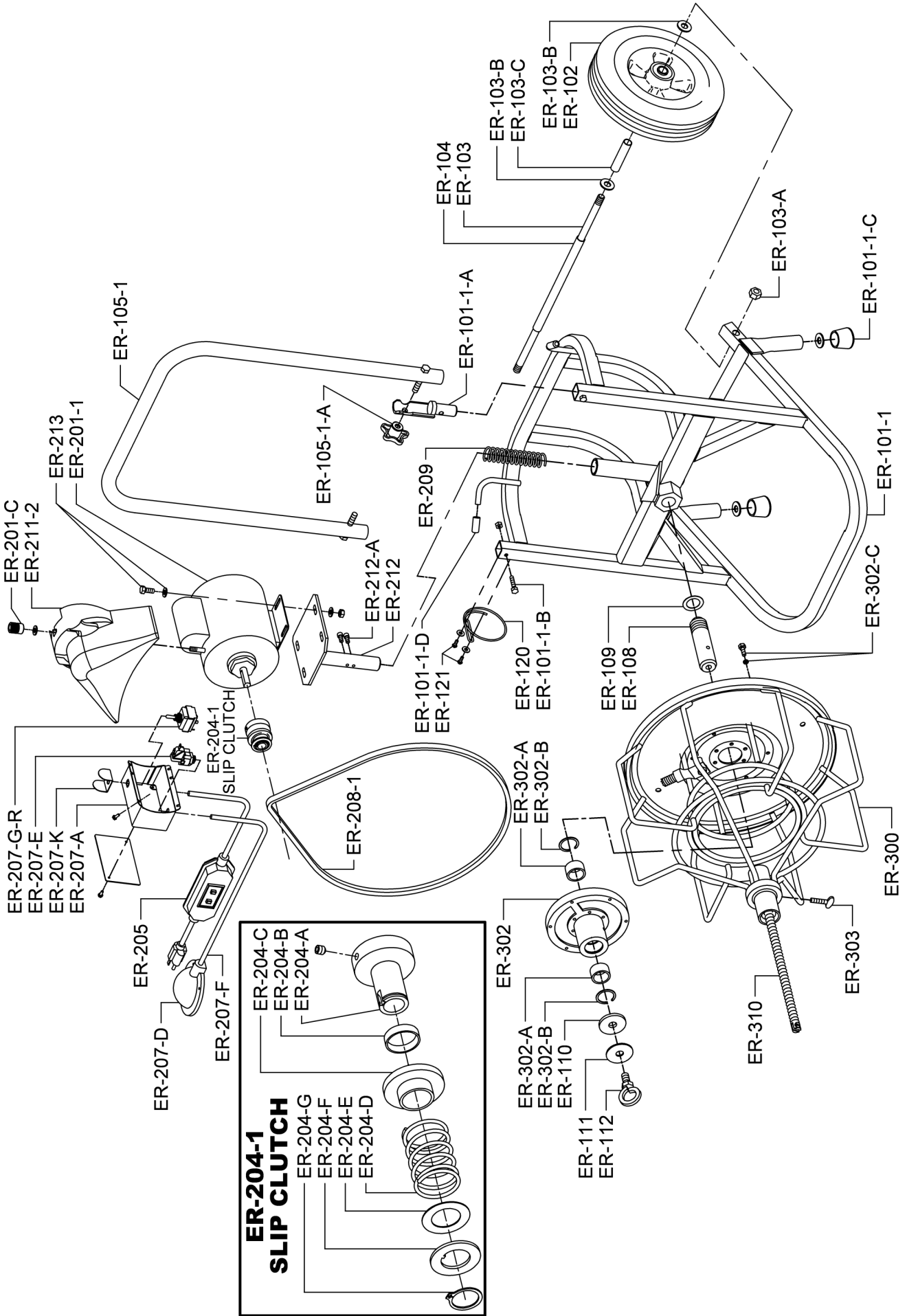


## EASY ROOTER PARTS LIST

CAT. NO.	DESCRIPTION	CAT. NO.	DESCRIPTION
ER-100-1	Frame Complete (Serial #1800 & Up)	ER-205	20' Power Cord w/Plug & GFCI
ER-101-1	Frame Only (Serial #1800 & Up)	ER-207	Air Foot Switch & Reverse Switch (Serial #1938 & Up)
ER-101-1-A	Handle Socket	ER-207-A	Box Only w/Cover & Screws
ER-101-1-B	Handle Hinge Bolt	ER-207-B	Foot Pedal & Hose
ER-101-1-C	Rubber Leg Tip (2)	ER-207-C	Hose Clamp (2)
ER-101-1-D	Rubber Cord Wrap Tip (2)	ER-207-D	Foot Pedal
ER-102	10" Rubber Wheel (1)	ER-207-E	Power Switch Diaphragm
ER-103	Axle	ER-207-F	Air Hose
ER-103-A	Locknuts (2)	ER-207-G	Reverse Switch Only (3-Way)
ER-103-B	Spacer Washers (4)	ER-207-G-R	Momentary Contact Reverse Switch Only (Red)
ER-101-C	Wheel Bushing (2)	ER-207-H	Rubber Switch Boot
ER-104	Wheel Spacer	ER-207-K	Switch Guard
ER-105-1	Handle w/Knobs (Serial #1800 & Up)	ER-208	V-Belt (52") (Thru Serial #ER85118)
ER-105-1-A	Handle Locking Knob (2) (Serial #1800 & Up)	ER-208-1	V-Belt (53") (Thru Serial #ER85119 & Up)
ER-108	Drum Support Shaft	ER-209	Motor Support Spring
ER-109	Bronze Thrust Washer	ER-211	Belt Guard for GE Motor - Discontinued
ER-110	Felt Washer	ER-211-1	Belt Guard for AO Smith Motor (Serial #4346 & Up)
ER-111	Drum Hub Retaining Washer	ER-211-2	Belt Guard w/Slot for Stud
ER-112	Drum Shaft Retaining Bolt for Large & Small Drum	ER-212	Motor Support Bracket w/Guide Screws
ER-120	Tool Holder	ER-212-A	Guide Screws (2)
ER-121	Screws & Washers for Tool Holder (2)	ER-213	Nuts, Bolts, Washers (4)
ER-201-1	1/3 hp Motor Complete w/GFCI, Air Foot Switch & Reverse Switch Assembly	ER-300	Large Open Cage (for 3/4" & 5/8" Cables)
ER-201-C	Knob for Belt Guard	ER-302	Drum Hub w/Bearings
ER-204-1	Slip Clutch	ER-302-A	Drum Hub w/Bearings (Set)
ER-204-A	Fixed Pulley Half	ER-302-B	Retaining Ring (2)
ER-204-B	Spacer	ER-302-C	Bolts & Lock Washers (12)
ER-204-C	Moveable Pulley Half	ER-303	Cable Locking Thumb Screw
ER-204-D	Spring	ER-310	Drum Connecting Cable & Lug
ER-204-E	Thrust Washer	ER-353	Cable Locking Thumb Screw
ER-204-F	Thrust Bearing	ER-354	Small Drum Retaining Bolt (Thru Serial #1799)
ER-204-G	Retaining Ring	ER-DECAL	Set of Safety Decals
		ER-VIDEO	Instructional Video

# EASY ROOPER SCHEMATIC DIAGRAM



**IMPORTANT: When ordering, give Serial Number of Machine.**