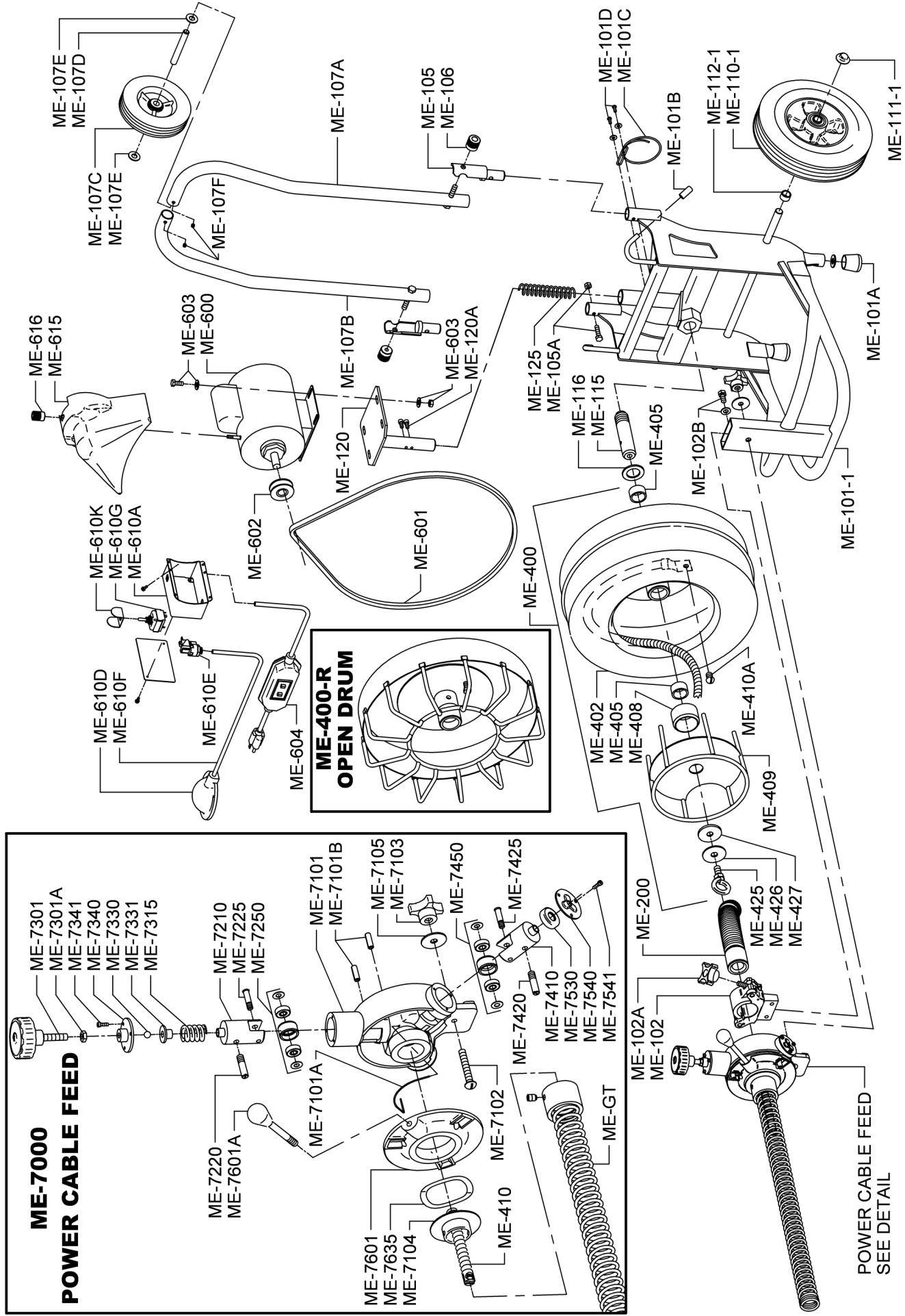


METRO-ROOTER PARTS LIST

CAT. NO.	DESCRIPTION	CAT. NO.	DESCRIPTION
ME-100-1	Complete Frame w/ 5/8" Axle & 10" Mag Wheels	ME-601-R	V-Belt (53")
ME-100-1-R	Complete Frame w/ 5/8" Axle & 10" Mag Wheels	ME-602	V-Belt Pulley
ME-101-1	Frame Only for 5/8" Axle & 10" Mag Wheels	ME-602-R	Slip Clutch
ME-101-1-R	Frame Only for 5/8" Axle & 10" Mag Wheels	ME-603	Motor Support Bolts, Nuts, Washers
ME-101-A	Rubber Leg Tips (2)	ME-605	V-Belt (52")
ME-101-B	Rubber Cord Wrap Tips (2)	GFI-20	20' Power Cord w/GFCI
ME-101-C	Cutter Holder w/Screws (2) & Washers (2)	ME-610	Foot Switch & Reverse Switch Assembly
ME-101-D	Cutter Holder Screws & Washers (2)	ME-610-A	Box Only w/Cover & Screws
ME-102	Distributor Tube Clamp	ME-610-B	Foot Pedal & Hose
ME-102-A	Clamp Locking Knob	ME-610-C	Hose Clamp
ME-102-B	Cap Screws & Washers (2)	ME-610-D	Pedal Only
ME-105	Hinge	ME-610-E	Power Switch Diaphragm
ME-105-A	Hinge Bolts & Nuts (2)	ME-610-F	Air Hose
ME-106	Handle Locking Knobs (2)	ME-610-G	Reverse Switch (3-Way)
ME-107	Handles	ME-610-G-R	Momentary Contact Reverse Switch (Red)
ME-107-R	Handles	ME-610-J	Barbed Adapter
ME-107-A	Left Handle	ME-610-K	Switch Guard
ME-107-A-R	Left Handle	ME-610-N	Strain Relief Nut
ME-107-B	Right Handle	ME-615	Belt Guard
ME-107-B-R	Right Handle	ME-616	Knob for Belt Guard
ME-107-C	Handle Wheel	ME-7000	Power Feed Cable Assembly
ME-107-D	Handle Wheel Axle	ME-7101	Feed Body
ME-107-E	Felt Washers (2)	ME-7101-A	Lifting Spring
ME-107-F	Set Screws (2)	ME-7101-B	Guide Pins (2)
ME-110	10" Wheel w/Cap (2)	ME-7102	Mounting Stud
ME-110-1	10" Mag Wheel w/Cap (2)	ME-7103	Mounting Knob
ME-111	Wheel Retainer Cap (2)	ME-7104	Spout & Retaining Cover
ME-111-1	10" Mag Wheel Retainer Cap (2)	ME-7105	Steel Washer
ME-112	Wheel Spacer (2)	ME-7200	Top Roller Assembly
ME-112-1	10" Mag Wheel Spacer (2)	ME-7210	Top Carrier Only
ME-115	Drum Shaft	ME-7220	Top Swing Pin
ME-116	Thrust Bearing	ME-7225	Feed Roller Shaft
ME-120	Motor Support w/Bolts, Nuts, & Washers	ME-7250	Feed Roller w/Bearing
ME-120-A	Guide Screws (2)	ME-7301	Feed Pressure Knob
ME-121	Cutter Holder Screws & Washers (2)	ME-7301-A	Limiting Nut
ME-125	Motor Support Spring	ME-7315	Pressure Spring
ME-200	Flexitube Distributor Tube Assembly	ME-7330	Ball Bearing
ME-400	Drum Complete	ME-7340	Ball Bearing Holder
ME-400-R	Open Drum Complete	ME-7341	Plate Screws & Washers (3)
ME-402	Drum Shell	ME-7400	Bottom Roller Assembly
ME-402-R	Open Drum Shell	ME-7410	Bottom Carrier Only
ME-405	Drum Bearings (2)	ME-7420	Swing Pin
ME-408	Drum Bushing	ME-7425	Bottom Roller Shaft
ME-409	Inner Drum Cage	ME-7450	Bottom Feed Roller w/Bearing
ME-409-R	Inner Drum Cage	ME-7530	Thrust Bearing
ME-410	Drum Connecting Cable	ME-7540	Cable Adjustment Plate
ME-410-A	Nut, Bolt & Washer	ME-7541	Cable Screws & Washers (3)
ME-425	Drum Retaining Bolt	ME-7601	Feed Control Disc w/Lever & Knob
ME-426	Retaining Washer	ME-7601-A	Lever & Knob
ME-427	Felt Washer	ME-7635	Wave Washer
ME-450	Small Drum for 1/2" Cable (15")	PO-703	Set of Feed Roller Assemblies (3)
ME-600	1/3 hp Capacitor Motor w/Foot Switch, Reverse Switch, & GFCI	ME-GT	Guide Tube for Metro Rooter
ME-600-R	1/3 hp Capacitor Motor w/Foot Switch, Reverse Switch, & GFCI	GTE	Guide Tube Extension
ME-601	V-Belt (55")	ME-DECAL	Set of Safety Decals
		ME-SCA	Stair Climber Assembly

METRO-ROOTER SCHEMATIC DIAGRAM



IMPORTANT: When ordering, give Serial Number of Machine.