

MODEL 88

Parts List and Diagram

CAT. NO.	DESCRIPTION	CAT. NO.	DESCRIPTION
88-100	Frame Complete	88-300-1	Motor & Gear Head Complete
88-101	Frame Only	88-300-2	Motor & Gear Head Complete
88-110	Axle	88-301	Motor (1725 RPM) Discontinued (See 88-300-1)
88-120	5" Caster	88-301-1	Motor (3450 RPM)
88-120-1	6" Caster	88-301-2	Motor (1750 RPM)
88-121	Caster Bolts (4)	88-302-1	Gear Head Only (7 to 1 Ratio)
88-130	Front Bearing Post	88-302-2	Gear Head Only (3.5 to 1 Ratio)
88-130-A	Bushings (2)	88-302-A	Gear Head Vent Cap
88-130-B	Grease Fitting	88-302-1-A	Gear Head Vent Cap
88-130-C	Post Adjusting Bolts (2)	88-303	Gear Head Mounting Bolts (4)
88-131	Post Bolts, Nuts, & Washers (3)	88-305	Motor Mounting Bolts, Nuts & Washers (4)
88-150-1	Handle Hinge Assembly	88-310	20 ft. Power Cord with GFCI
88-150-1-A	Hinge Top	88-311	Air Foot Switch & Reverse Switch Complete
88-150-1-B	Hinge Bottom	88-311-A	Box Only with Cover & Screws
88-150-1-C	Hinge Roll Pins (2)	88-311-B	Foot Pedal and Hose
88-155-1	Handle Locking Sleeve	88-311-C	Clamps (2)
88-160-2	Handle with Pedal Holder (from Serial #1270 and Over)	88-311-D	Foot Pedal
88-160-2-A	Locking Collar Shop Screw	88-311-E	Power Switch Diaphragm
88-170	10" Wheel	88-311-F	Air Hose (11 ft.)
88-171	Hat Type Push Nuts (2)	88-311-G	Reverse Switch
88-172	Spacer Washers (2)	88-311-H	Rubber Boot (Rental Units Only)
88-190	Plastic Clutch Face Cover		
88-200	Clutch Assembly	GFI-88	Ground Fault Circuit Interrupter for Model 88
88-201	Clutch Housing with Set Screws (Through Serial #1797)	5/8 G-CDC	Cable Drive Coupling with "G" Connector for 5/8" Shaft
88-201-1	Clutch Housing with Set Screws (Serial #1798 & Over)	1/2 G-CDC	Cable Drive Coupling with "G" Connector for 1/2" Shaft
88-205	Drive Plate	5/8 L-CDC	Cable Drive Coupling with "L" Connector for 5/8" Shaft
88-205-A	Round Socket Head Bolts 1" x 1/4" (6)	1/2 L-CDC	Cable Drive Coupling with "L" Connector for 1/2" Shaft
88-210	Clutch Hub with Roll Pin	7/8 L-CDC	Cable Drive Coupling for 6L78 7/8" Cables
88-215	Adjustment Nut	88-DECAL	Set of Safety Decals
88-215-A	Brass Slotted Head Screw 1/2" (2)	88-VIDEO	Instructional Video
88-220	Friction Disc (2)		
88-225	Spacer Bushing		
88-230	Fixed Plate		
88-235	Spring Washer (2)		
88-240	Locking Washer		
88-245	Clutch Shaft (5/8")		

General Wire Spring Co.

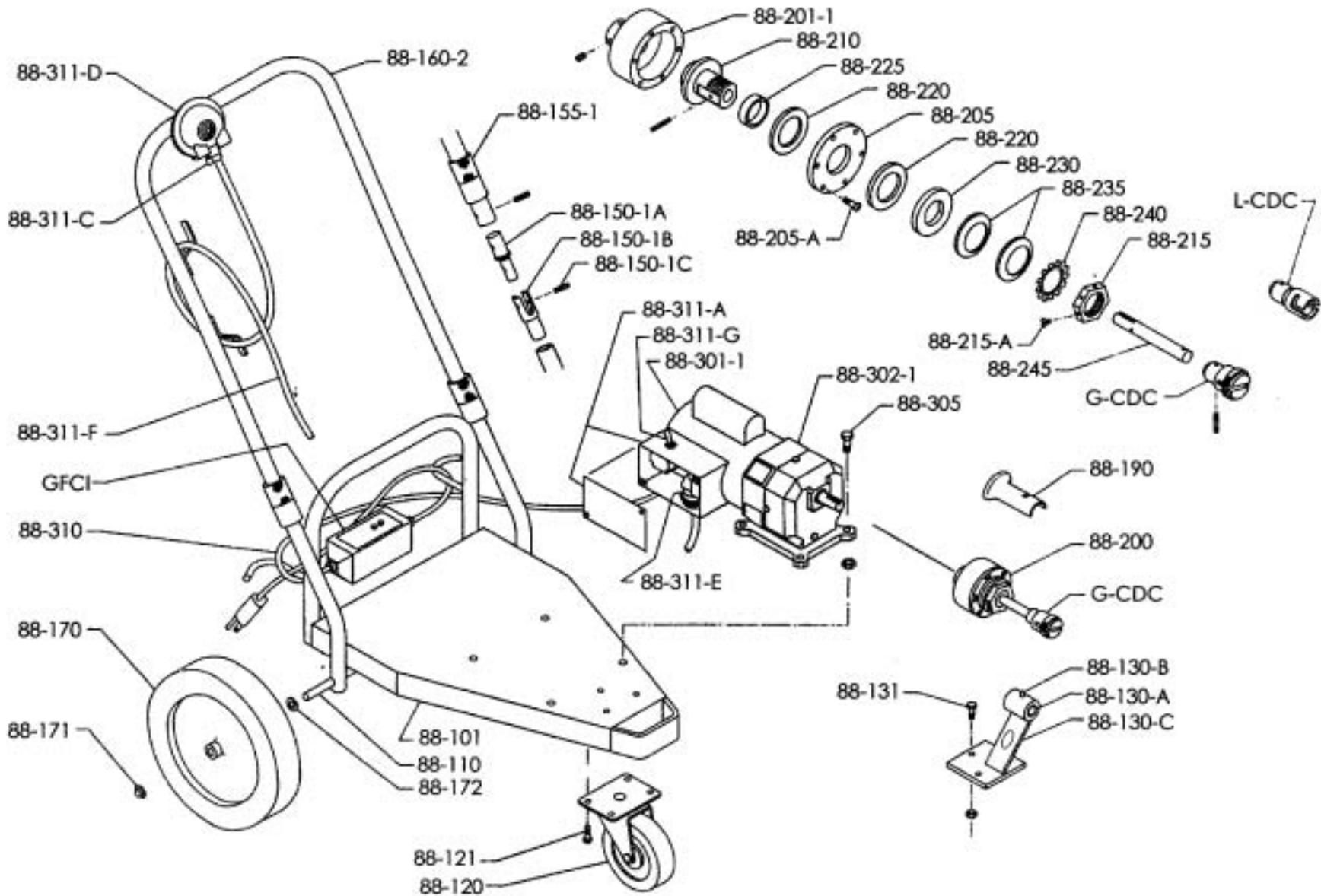
1101 Thompson Avenue

412/771-6300

McKees Rocks, PA 15136 USA

MODEL 88

Schematic Diagram



IMPORTANT: When ordering, give Serial Number of Machine